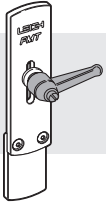
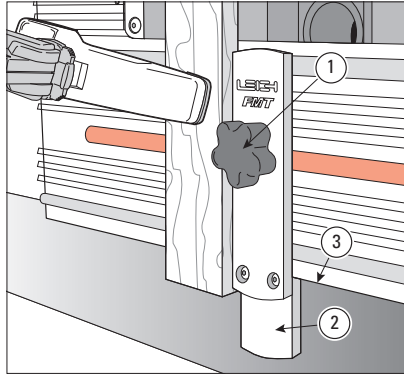


# Side Stop Fence Upgrade for Earlier Model FMT Jigs

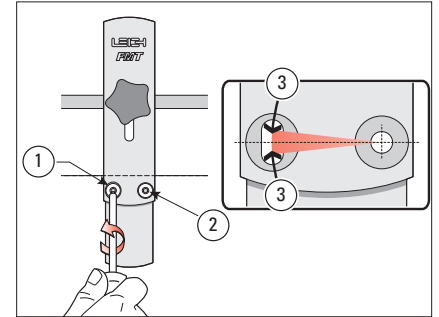


**NOTE** The side stop fence now has a “lever” instead of a knob (as shown in the illustrations below). The instructions are the same for both.

**1** The FMT’s side stop knob (lever) is attached in all modes by a single knob and T-bolt inserted to the **center clamp plate slot** ①. Most tenon pieces are routed vertically, and for that purpose the short part of the fence ② acts as T-square against the edge of the clamp plate ③. In this mode the Leigh logo faces toward you.

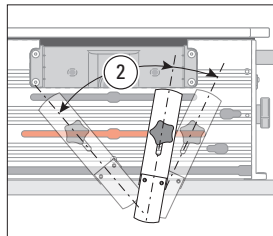
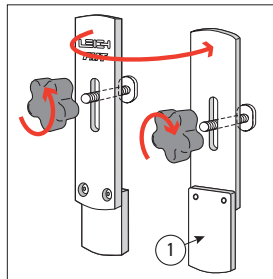


**2** The side stop fence is set square at the factory, **but you may need to adjust the side stop fence if your router bit alignment is not exactly perpendicular to the table.** To adjust: slightly loosen the ‘pivot’ screw ① and the right hand ‘lock’ screw ② with the FMT hex driver. Adjust the angle ③. Tighten the screws and rout test joints to establish the correct setting by trial and error. Once locked in this position it should never require adjustment when used with that same router.



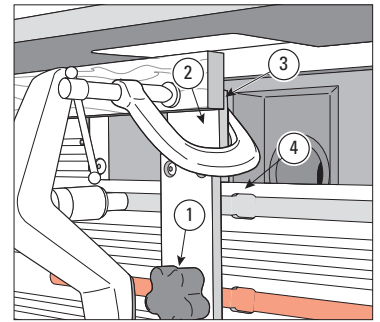
**⚠ Note** Never rout tenons with the short part of the fence “up”, in the bit opening. See warning below.

**3 Angled Joints** Remove the knob and T-bolt. Reverse the fence so the short end faces toward you ①. The fence may now be set at any angle along the center clamp plate slot ② by tightening the knob.



**4 Use fence as a mortise steady.**

When routing mortises in small sectioned stock the router bit may cause the workpiece to ‘flutter’ and cause poor joint fit and alignment. With the T-bolt back in its original position ①, the fence may be inverted with the short end up in the bit opening ②. A suitable small clamp is used to hold the mortise piece against the face of the short fence ③ which is perfectly flush with the clamp plate face ④. **When routing mortises at the end of a board, always move the table as far as possible left or right to minimize the length of unsupported workpiece.**



**⚠ Warning** Never rout tenons with the side stop fence in the inverted position (short end up in the bit opening). The inverted fence mode is only used to support small mortise stock.

