

Replacing Guide Fingers on Leigh Super Jigs For the Super12, Super18 and Super24



Before starting, watch the Instructional Video

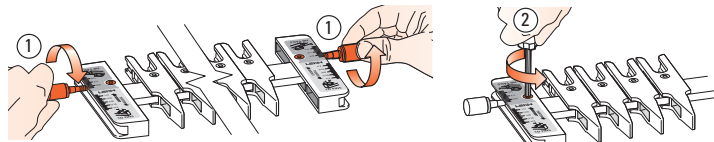
Scan the QR Code to stream to your tablet or smart phone, or view video in the support section at Leightools.com



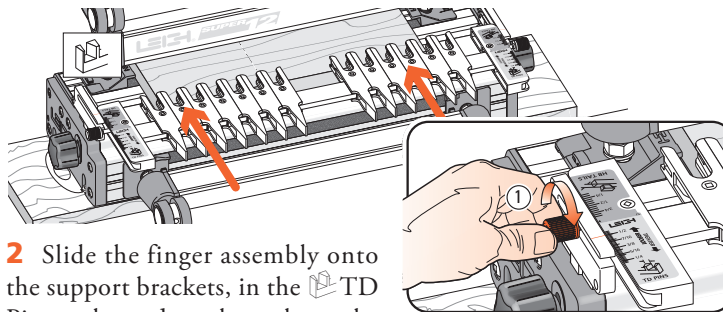
Scan QR Code

IMPORTANT ALIGNMENT PROCEDURE

After removing or replacing guide fingers on your jig, you must reset the scales to the finger bar before using your jig again — otherwise joints will be misaligned! The following three steps make it easy.

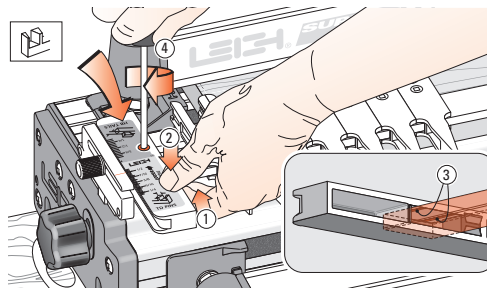


1 Before using the Super Jig, the scales must be set into position on the finger assembly, with the thumbscrews installed in the scales **1**. **Loosen the scale lock screw 2 at each end by one complete turn only.**



2 Slide the finger assembly onto the support brackets, in the TD Pin mode, and set the scale on the 1/2" [12,7mm] setting. **First, tighten both thumbscrews 1. Do not lower the assembly onto the finger support board.**

3 **Pull up on the finger bar 1 while pushing down on the scale 2** to ensure the bar is touching the two registration pads 3 inside the scale. **Maintain pressure and tighten the scale lock-screw 4.** Repeat at the other end. To maintain correct finger assembly alignment, follow this procedure whenever you remove the scales from the finger assembly.



Tel.: 800-663-8932 (Canada/USA)
Customer Service: leigh@leightools.com
Technical Support: help@leightools.com

Printed in Canada 12/2021