

Rabbeted Half-Blind Dovetails



Watch the Online
Instructional
Video

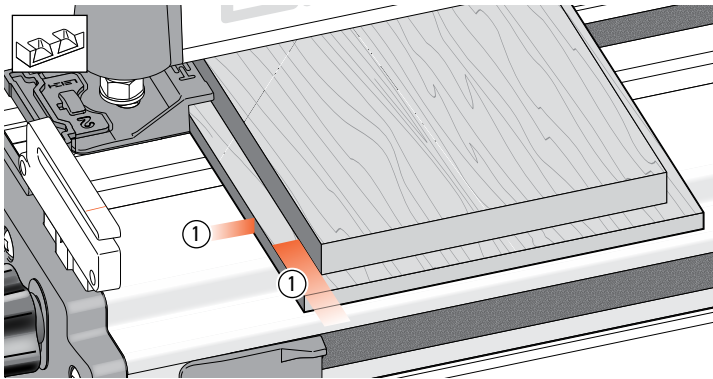


Scan QR Code

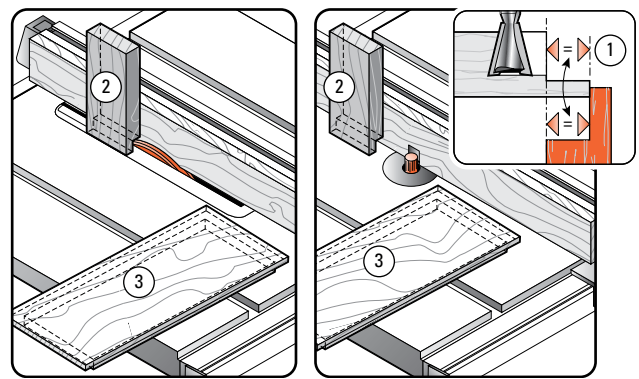
Reduce your learning time dramatically! Stream to your smart phone or tablet to use in your workshop while you're working. See Instructional Videos section in Support menu at leightools.com or scan QR code for instant video.

Before attempting rabbeted half-blind dovetails, first master the techniques of flush half-blind dovetails in Chapter 9, Variably Spaced Half-Blind Dovetails.

Note: Rabbeted half-blind dovetails cannot be routed in a single pass – the lip of a drawer front makes it impractical, as each piece would have to be routed separately, in which case it is easier to use the variably spaced method.

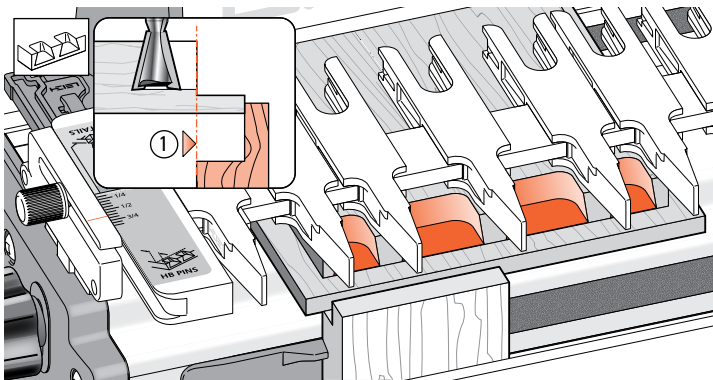


11-1 Provided the drawer front lip is $\frac{3}{8}$ " [9,5mm] or less in each direction ①, you can mount and rout rabbeted drawer fronts and sides exactly the same way as flush drawer fronts, except...

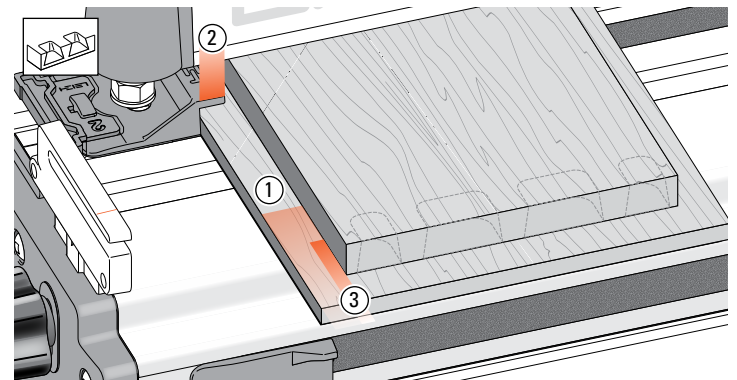


11-2 Rabbeted Pins You will need to block the scrap stop in the front of the jig out from the jig's front face by exactly the width of the rabbet ①.

An easy accurate way to do this is to rabbet the end of the scrap piece ② vertically over a dado blade or router bit at the same time as you rabbet the drawer front (horizontally) ③.

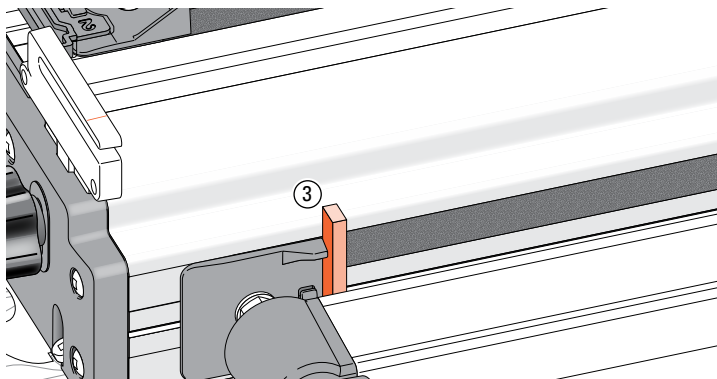


11-3 This brings the pin ends exactly in line with the front jig face ①, ensuring that the scale reading is accurate.

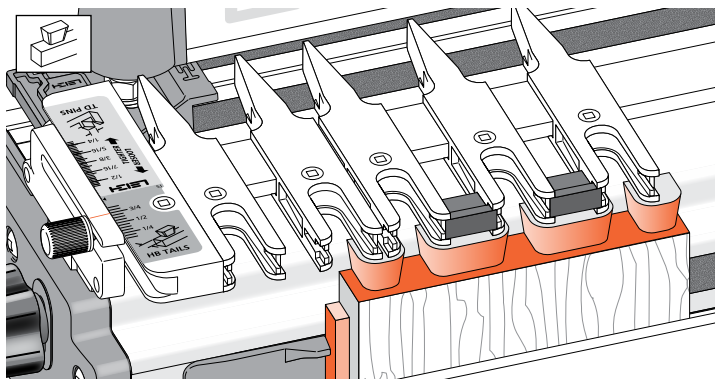


11-4 If the rabbet width ① is greater than the top side stop width of $\frac{3}{8}$ " ②, the drawer side (tailboard) must be blocked away from the front side stop (see 11-5) by exactly the width of the rabbet minus $\frac{3}{8}$ " ③. For example, a $\frac{5}{8}$ " rabbet ① would require the tailboard to be offset by an additional $\frac{1}{4}$ " ③.

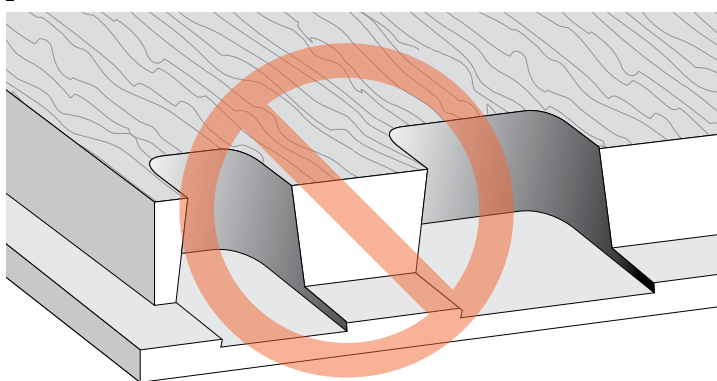
Make a spacer block of the required width and...



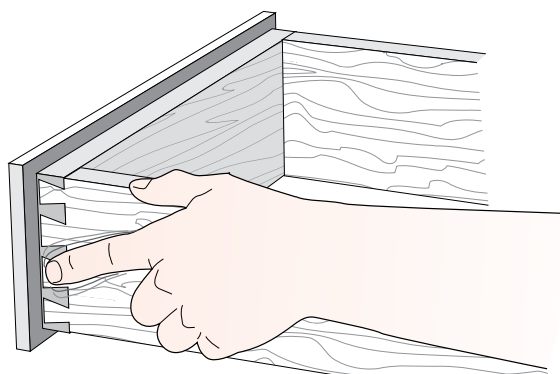
11-5 Stick the block ③ to the jig face with double-sided tape, making sure it touches the side stop.



11-6 The drawer side will now be stepped in from the side stop by the width of the rabbet, bringing the sockets in line with the pins.



11-7 Make sure you select a dovetail bit that has a working depth of cut less than the rabbet height. Otherwise, you will rout into the rabbet.



11-8 It is difficult to clean up the drawer sides and front corner after assembling a rabbeted drawer, so make sure the fit is flush before you complete the drawers See 9-28 to 9-30. ■