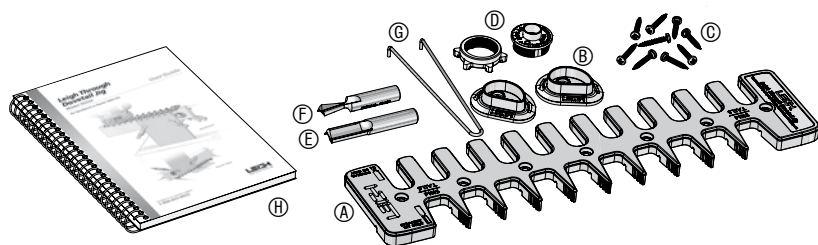


## TD330 User Guide

# CHAPTER 1 Introduction



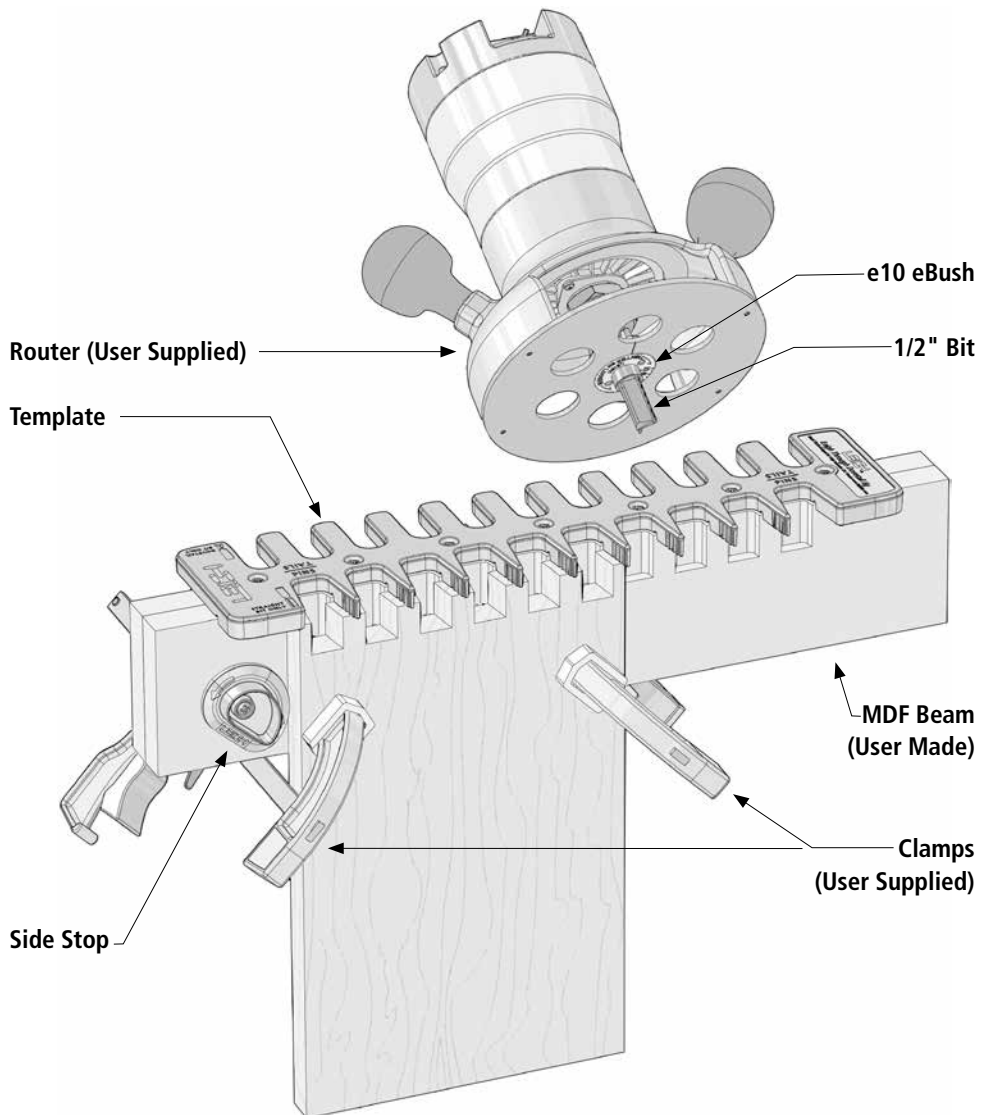
## What's Included

	PART DESCRIPTION	PART NO.	QUANTITY
	(A) Jig Template with Decal	125128	1
<b>Bag 1</b>	(B) Side Stops	125110	2
<b>Bag 2</b>	(C) Phillips Pan Head Wood Screws, No.8 x 1"	313585	9
	(D) Guide Bushing, e10* eBush	e10	1
	(E) Straight Bit, Carbide Tipped, 1/2"	160	1
	(F) Dovetail Bit, Carbide Tipped, 1/2", 8°	80-500	1
	(G) Pin Wrench	730V	1
<b>Bag 3</b>	(H) Fully Illustrated User Guide	125115	1

***If any parts are missing from your jig, please notify your supplier or Leigh immediately. See Chapter 8, Customer Support.***

\* Leigh e10 Elliptical Guide Bushing: U.S. Patent no.8,256,475 UK Patent no.GB2443974 Canada Patent no.2,611,232

## Leigh Through Dovetail Jig Model TD330



## Units of Measure

### IMPORTANT! INCHES AND MILLIMETERS

Text and illustrations in this English language user guide indicate dimensions in both inches and millimeters, where applicable, with “inches” first, followed by “millimeters” in square brackets, i.e. 1/2" x 2"[12,7mm x 51mm].

**Don't be concerned that the inch/millimeter equivalents are not mathematically "correct".**

## Bit Specifications

There are two bits used with the TD330 Through Dovetail Jig. Your new jig is shipped with a 1/2" 2-flute, carbide tipped straight bit, and a 1/2" 8° carbide tipped 2-flute dovetail bit. You may also use a 1/2" spiral upcut bit in high speed steel or solid carbide.

**Router requirements:** The Leigh TD330 Through Dovetail Jig requires a router with a 1/2" collet.

Bit Specifications							
Leigh Bits	A Bit Diameter	B Max. Cutting Depth	C Shank Diameter	D Shank Length	E Overall Length	Use with Collet	Use with eBush
 <b>160**</b> Carbide Tipped	1/2"	1 1/4"	1/2"	1 3/4"	3 1/8"	1/2" Collet	e10
 <b>80-500**</b> Carbide Tipped	1/2"	13/16"	1/2"	1 3/4"	2 3/4"	1/2" Collet	e10
Optional Bits							
 <b>180*</b> High Speed Steel	1/2"	1 1/2"	1/2"	2"	3 1/2"	1/2" Collet	e10
 <b>180C*</b> Solid Carbide	1/2"	1 5/8"	1/2"	1 7/8"	3 1/2"	1/2" Collet	e10

\* Optional spiral upcut bits rout cleaner and faster, leaving a smoother finish.

\*\* The part number on the actual router bit is made up of the bit number and 3 letters, ie: Part no.160 XXX. These 3 letters are used for internal purposes only.

## Clamping

The TD330 jig is clamped to the workpiece using two user supplied quick grip clamps, or similar.

## Marking the Boards

Before mounting and routing the boards, mark them as follows. A “**P**” and a “**T**” are marked on the boards to indicate which is the pin board and which is the tail board. The marked face indicates it is an outside board and always faces away from the jig and outwards on the assembled box.

